

Self-guided Holcomb Tree Trail hike

CT Trails Day, Saturday June 6 and Sunday June 7

There are about 40 mature trees with identification tags along this self-guided route, which is approximately two miles long. See how many you can find. There are also about three dozen young trees recently planted along the mowed paths in the fields that are also worth exploring. Walk along the mowed paths (approximately one mile) to view these trees before returning to the parking area.

This hike starts and ends at the main campus of the Holcomb Farm, located at 113 Simsbury Road in West Granby, CT. This hike is best done following the clockwise route described below to best see the tree identification tags. The letters indicated on the map and in the directions refer to the brown trail signposts located at every intersection. Use the QR code on any trail signpost to access the full Holcomb Farm trail map on our website. Use the accompanying map to help locate the trees with identification tags.



DIRECTIONS

1. Cross the intersection of Simsbury Road and Day Street South to the trailhead.
2. Follow the gravel farm road into the upper farm fields.
3. Turn left at "Woods Trails" sign and follow the mowed path along the perimeter of the potato field, past several of the newly-planted trees.
4. Enter the woods at the northeast corner of the potato field and turn right onto the Blue Trail (Vernal Pool Loop) at Trail Signpost L
5. Continue on the Blue Trail to Trail Signpost Q, then take the Red Trail (Laurel Loop).
6. Continue on the Red Trail to Trail Signpost P. Two special locations of note are a joined pair of large oaks on the right, one is a black oak and the other is a white oak. A little further along on the left is a paper birch with the bear claw marks below the tree identification sign.
7. Continue on the Red Trail to sign post O. At sign post O, you can either proceed up hill on the Orange Trail (Refuge Trail) or continue on the Red trail to Trail Signpost M.
8. Take the Red Trail back to the southeast field (Please note there is a trail off to the left onto private property). This field is not mowed and can be wet.
9. Walk west along the uphill side of the southeast field back toward the potato field.
10. Follow the mowed path past the pond on your left and turn right to go along southeastern edge of the potato field to find several more marked trees on the eastern tree line.
11. You can add a short extra loop along the Red Trail in the "labyrinth" to see more marked trees and take the short path back to the fields.

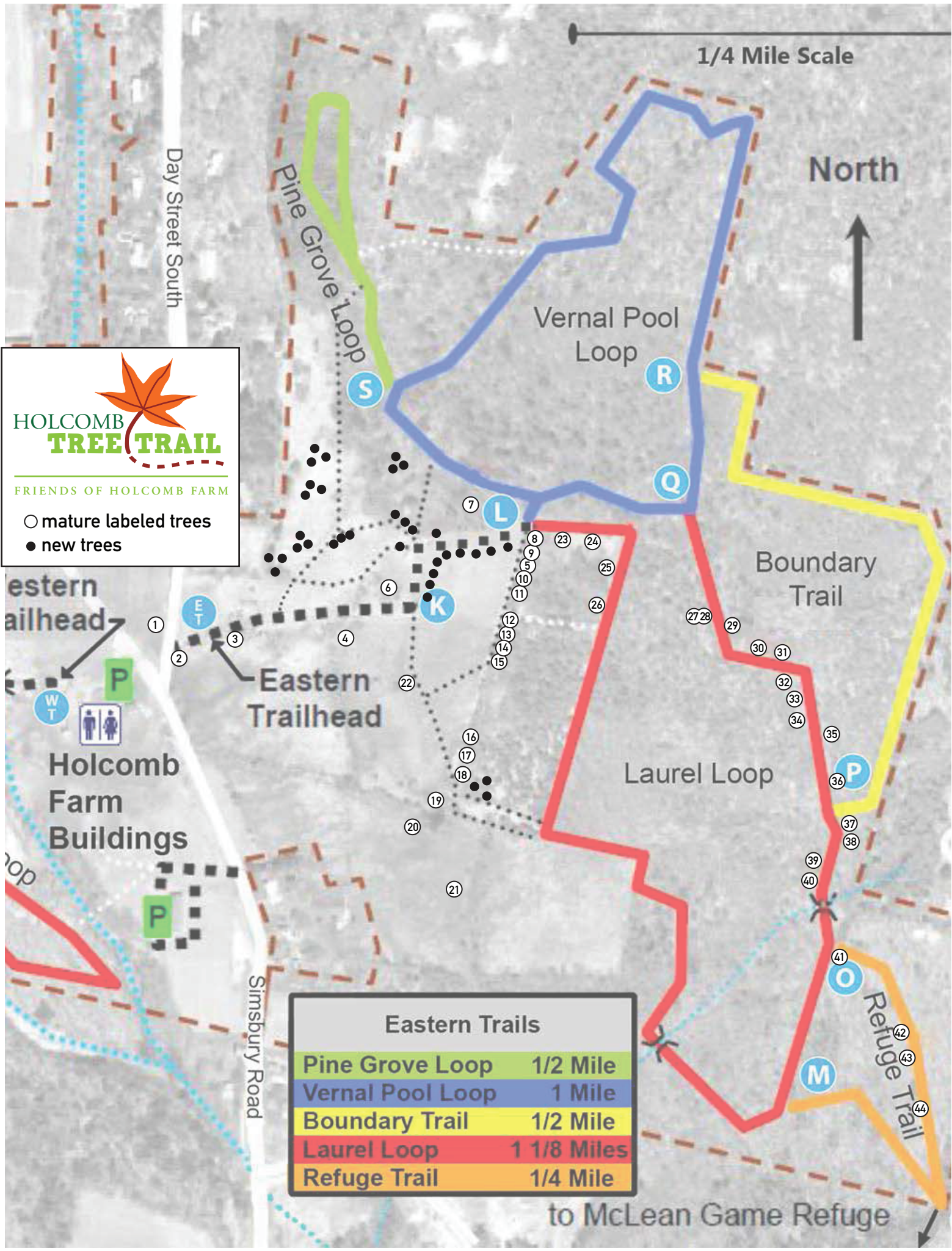
List of labeled mature trees: see map for location

- | | |
|-----------------------|----------------------|
| 1. Sycamore | 23. Ailanthus |
| 2. Shagbark hickory | 24. White Pine |
| 3. Spicebush | 25. Sassafras |
| 4. Apple | 26. Red Cedar |
| 5. Autumn Olive | 27. White Oak |
| 6. Apple | 28. Black Oak |
| 7. White Oak | 29. Beech |
| 8. Yellow Birch | 30. Red Maple |
| 9. Pitch Pine | 31. White Oak |
| 10. White Oak | 32. Red Oak |
| 11. Red Maple | 33. Beech |
| 12. Paper Birch | 34. Red Oak |
| 13. White Pine | 35. Paper Birch |
| 14. Black Birch | 36. Shagbark Hickory |
| 15. Eastern Red Cedar | 37. White Oak |
| 16. Red Oak | 38. Eastern Hemlock |
| 17. Common Apple | 39. Black Birch |
| 18. Black Birch | 40. Red Oak |
| 19. Sycamore | 41. Black Oak |
| 20. Black Cherry | 42. White Pine |
| 21. White Ash | 43. Pitch Pine |
| 22. Red Cedar | 44. Pitch Pine |

List of new trees

Black Tupelo, cultivar "Afterburner"
American Linden (Basswood)
Shingle Oak
Kentucky Coffee Tree, cultivar "Espresso"
American Elm, cultivar "Princeton"
Swamp White Oak
Japanese Tree Lilac, cultivar "Ivory Silk"
Corneilan Cherry Dogwood
Kousa Dogwood
Sargent Cherry
White Oak
Corkscrew Willow
Sweetgum







**HOLCOMB
TREE TRAIL**

FRIENDS OF HOLCOMB FARM

○ mature labeled trees
● new trees

Eastern Trails	
Pine Grove Loop	1/2 Mile
Vernal Pool Loop	1 Mile
Boundary Trail	1/2 Mile
Laurel Loop	1 1/8 Miles
Refuge Trail	1/4 Mile