

FRIENDS OF HOLCOMB FARM

2023 ANNUAL REPORT

Friends of Holcomb Farm
113 Simsbury Road
West Granby, CT 06090
www.holcombfarm.org

President's Message

Dear Friends,

“It was the best of times; it was the worst of times....” Well, maybe not as bad as Charles Dickens’s *A Tale of Two Cities*, but 2023 did leave us with a bit of whiplash, as the reports to follow will attest. While our board of directors spent much of the year planning for and putting on celebratory events marking 30 years of the Friends of Holcomb Farm, our farm crew toiled in soaking rains. By October, they had delivered a successful summer growing season for CSA members, farm store customers, and Fresh Access partners, but it came at the expense of having to cancel the Winter CSA, typically an important financial engine for us. Still, we celebrated by hosting 30 years’ worth of board members, volunteers, and supporters, including a fabulous 30th anniversary dinner on a beautiful evening in the North Barn. We heard tales of the early days: shoveling rotted hay from barn lofts, chasing pet skunks, hatching salmon, educating kids, and in myriad ways working through triumphs and struggles, just as the Holcomb Family undoubtedly did while living and working this land since 1756.

And, after all, that is farming in New England, right? Hoping for the best, planning for the worst, and believing there are brighter days ahead. Building on the 30-year foundation built by those who preceded us, the Friends of Holcomb Farm accomplished much in 2023, and are positioned for continued contributions to our local and regional community, thanks to the donors, volunteers, and granting agencies that sustain us.

Sustainably Yours,



Jenny Emery
President

FRIENDS OF HOLCOMB FARM

Board of Directors

Jenny Emery, *President*
Jack Lareau, *Vice President*
Rocky Piccirillo, *Treasurer*
Natalie Mackiel, *Secretary*
Lori Armentano
Susan Canavan
Amy Eisler
Eric Lukingbeal
Laura Midura
Christiane Pimentel
Donna Snyder





Photos from the Celebration 30 Dinner held at the North Barn in October 2023.

CELEBRATION 30

The Friends of Holcomb Farm Celebrate 30 Years of Community Service, All Season

From early May plant sales through a celebratory, 30th anniversary dinner in late October, the Friends hosted a variety of events throughout the 2023 growing season, all designed to bring more people to the farm and to honor and thank the many people—members, volunteers, board members, donors, and town officials—without whom this place would not be what it always has been and will always continue to be: the Jewel of Granby. We thank the many sponsors who helped us make this a special celebration, and the many, many community members who participated.

RECOGNITION

Walter Ford Honored with Friends of Holcomb Farm Bud Murtha Award

Periodically, Holcomb Farm bestows its highest honor, the Bud Murtha Award, on volunteers who mirror Bud's dedication to the ultimate community virtue: volunteerism. In 2023, we were pleased to recognize our special friend and neighbor, Walter Ford. Thanks to Peggy Lareau, a previous award winner, for sharing these thoughts:

"You can't do better than Walter Ford and his consistent, long commitment to the Holcomb Farm. He is a kind soul who is truly bonded to the farmland and woods of Holcomb Farm. He has turned that bond into action on behalf of the land and community. Well beyond that, he gently guides others working on the land to pull together, create, and progress agreeably toward a common goal. Walter's most visible work has been 15 years of mowing paths through the meadows that we all take for granted, and gently coordinating the other mowers who join in that effort. But there is so much more. He just keeps chipping away, undaunted at the overwhelming task of wrestling with invasive plants that are trying their best to take over the fields, finding areas that need salvation, and then looping in other people to help willingly... Walter Ford has vision, leadership, commitment and remarkable insight and kindness in all this. "



Presentation of the Bud Murtha Award: (left to right) Jenny Emery, FOHF president; Shirley Murtha, wife of the late Bud Murtha; Walter Ford; and Eric Lukingbeal, FOHF board member.

Friends thank retiring President Bob Bystrowski and Administrator Cathy Browning

In 2012, the Friends faced a new reality: they no longer had a large state grant to run the Learning Center, which meant they also no longer afford a paid executive director to run things. They had inherited a farming program to operate, but it was losing money every year. Changes were needed. The new relationship between the Town and the Friends, through which the Town would assume control and operation of the main campus and buildings and the Friends would focus on farming and land stewardship, was promising, but unproven. This is the organization Bob Bystrowski stepped in to lead 12 years ago, as Board President. In 2023 Bob stepped down, entrusting his successors with an organization left far stronger than he found it. Thank you, Bob!

Cathy Browning came to the Friends in 2017 and set to work improving the efficiency and effectiveness of the business side of the farm. We have Cathy to thank for so many things—from getting us through the Department of Labor audit after we ventured into the regulated world of H2A employees to handling an insurance claim for a damaged greenhouse; and from getting us set up to accept SNAP benefits to implementing Square for point-of-sale transaction management. Along the way she

has interacted with countless members and donors and gotten to know so many Friends of the Farm—even if only by name.

We thank both Bob and Cathy for their immense contributions to the farm; and we look forward to our continued friendship with them both and with their families.

FARMING

Farming @Holcomb Farm: A letter from Farm Manager Joe O’Grady



Pole beans grow in Greenhouse #5

The 2023 farming season started strong: The successful 2022 growing season enabled us to provide winter produce to a record breaking 158 Winter CSA members in January and February and we were able to host additional pop-up sales in March and April. Unfortunately, the weather swung back to floods and mud for the remainder of 2023, and we limped into the winter unable to run our beloved (and financially important) Winter CSA.

The Winter CSA is critical to the farm’s annual financial health. A robust Winter CSA means we have enough produce to sustain our Summer CSA and still reserve precious storage crops to feed us in the winter, with correlating financial implications. In 2023, we saw the farm take its worst financial hit in some time. Fortunately, we know that one season does not a farm make. We remain committed to “growing the growing season” and the demand for our fresh local food throughout the New England winter grows ever stronger.

We also recognize that there is more to the health and sustainability of a farm than just operating in the black and on that front Holcomb Farm had a very profitable

year. In early spring the farm spent valuable time and resources renovating worker housing—the kitchen ceiling and all interior walls of the Annex were scraped and painted. More upgrades to the farm are planned, including major barn renovations—stay tuned for that!

One of the few weapons in the farmer’s arsenal to mitigate the impacts of climate change is to grow more crops in greenhouses. In May we added a beauty: Greenhouse #5. It was promptly put to work—seeded with pole beans both to get a crop to feed our Summer CSA and to improve the soil for a winter crop of spinach—and it was the most productive 0.2 acres on the farm by far!

We’ve made a concerted effort over the past few years to add shelterbelts to all our fields. These shelterbelts are mixed species plantings of perennials that attract and feed beneficial insects, pollinators, and wildlife; buffer our fields from excess rainfall; and help keep the Holcomb Farm ecosystem diverse and vibrant. Last year we planted a windbreak shelterbelt in the Carriage Barn Field with pine, clethra, hazelnuts, and bloodtwig dogwoods. Watch for these shelterbelts to keep popping up and filling out



We held a special 30th Anniversary CSA Open House in June.

on the farm. Annual flora diversity is already a strength on our farm and we intend to keep adding beneficial perennials to this mix.

2023 was also a year for new fields, thanks to the Granby Land Trust. We are now stewarding four fields on the east side of Simsbury Road along the Salmon Brook. Two fields were in production last year with two more to follow in 2024. These new fields with great access to water gave us the opportunity to bring potatoes back into our crop plan. The Long Field potato crop was one of the loveliest sights of 2023 and the harvest was happily gobbled up by our Summer CSA and Fresh Access partners.

A tremendous amount of food from our fields was indeed gobbled up in 2023. More than \$80,000 worth of our summer produce (that's wholesale value!) went to our Fresh Access Partners and we fed 524 Summer CSA members from our fields. Many CSA members were shocked to hear that we were having a bad year because our CSA barn was full of high-quality choices every day—for 20 straight weeks. It's a point of great pride that we were able to navigate the season despite all the flooding and crop losses and keep our CSA members and Fresh

Access partners happy, but we will happily forgo this pride in exchange for a stress-free season where the rains are timely and gentle and crop losses few and far between.

Of course, a difficult financial year would typically mean no new investments nor exciting changes for the year ahead. Enter the Friends of Holcomb Farm board of directors, who secured a slew of grants, which have us thrilled for the 2024 season. We'll be spreading 280 cubic yards of compost on the farm this year for pennies on the dollar thanks to a Connecticut Department of Agriculture grant. We mentioned how important greenhouses are in dealing with climate change—having them is one thing, optimizing their efficiency with proper automated ventilation and air flow is another. Thanks to Nassau Financial Group and its participation on our behalf in the Connecticut Neighborhood Assistance Act tax credit program, we will finish upgrading the rest of our greenhouses this year and will reap the benefits of happier, healthier plants for years to come. We can also make the best use of our new GLT fields with new irrigation equipment to keep the soil happy in drought years and a new potato digger that will allow us to scale up production over the next couple of seasons.

So Much to be Thankful For

We head into the 2024 season with the ever-present anxiety of climate change and wondering what the weather will bring this season, but we do not feel powerless or timid. We have seen direct benefits from decisions we made in our fields and in our overall crop plan. We have an active board of directors that supports the farm in ways far beyond the tens of thousands of dollars in grants they've secured. We have great friends like the Granby Land Trust helping us get on and stay on farmland. We have hundreds of CSA members who stick with us through drought and flood, and Farm Store customers who visit us first before heading to the grocery store. We have Fresh Access donors and community partners that comprise a reliable 25 percent of our market demand, annually. And we have a farm crew that returns year after year in spite of all the sacrifices and hardships endemic to farm life. We thank you all!

STEWARDSHIP

Energized by the 2022 achievement of permanent preservation of the property, 2023 saw renewed emphasis on our land stewardship activities.

With a team of amazing volunteers, the Friends manage 277 acres of woodlands and meadows at Holcomb Farm, providing the public with a safe and scenic place for walking, cross country skiing, snowshoeing, and riding horses. In 2023, our volunteer trail stewards kept over 10 miles of woodland trails clear of fallen trees and limbs and continued the fight against damage caused by excessive rains. Public use of this community resource continues to grow, and with it our plans for increased investment in access.

A new trails map is coming! We have engaged Steve Perry of Sperry Geospatial to bring his GPS mapping tools and talents to our stewardship team. In fall of 2023 he began producing a new trail system map with more details and accuracy, and options for a digital map on our website and Avenza. We also worked with the Granby Land Trust (GLT) to explore a way to access to our west side trails south of the Simsbury Road bridge, as these trails are difficult to access after the footbridge

over Salmon Brook washed out in 2021. We are grateful to the GLT for offering to create a new trail through their Wilcox Family Preserve, which will provide access to the Holcomb Farm trails on the west side of Salmon Brook. Public access should launch by mid-2024.



Close up of an American larch, also known as tamarack. Four of these trees were planted in 2023.



Detail from the new trails map shows the new GLT Hastings Trail on the GLT Wilcox Family Preserve which connects to the Holcomb Farm western trails.

Holcomb Tree Trail

The Holcomb Tree Trail, Stewardship’s biggest project, continues to grow. In 2023, we planted 10 native shrubs and 17 new trees, including a grove of crabapples near our mature crabapple and a small grouping of magnolias. We continued to care for all the 100+ new trees—though the excessive rains of 2023 did much of the watering for us. We also continued to produce new educational content to post on the trail kiosk and mowed the nearly three miles of walking paths in the fields.

In 2023, we increased our focus on major invasive plant removal projects, with the most notable being the rehabilitation of the area around the pond and a section of hedgerow between two old grazing fields. We hired

Rehabilitation of the area surrounding the pond began in March 2023.



TR Landworks, which used specialized mulching machinery to clear the massive snarl of invasives that had taken over both areas. We planted native trees and shrubs around the pond to reestablish the vernal pool environment and more will be planted in 2024. Near the cleared section of the hedgerow, volunteers also girdled several ailanthus trees, which is the first step in their removal. These invasive trees are the favorite of the spotted lanternfly, the latest insect invader moving into the Northeast, which threatens fruit trees. Also, as part of our effort to keep the momentum of invasive control, we established regular monthly workdays (mostly for two hours on Saturday mornings). This is part of the overall FOHF effort to harness the energy of our amazing volunteers and provide them with new ways to connect with the farm.

Appreciation

The Friends thank all our land stewardship volunteers who labor to reduce the invasives, care for the new trees, and keep the trails clear. We especially thank Walter Ford, our longstanding volunteer who created the mowed path network years ago and continues to mow miles of path every year. (See page 4.)



Volunteers cut invasive plants out of a hedgerow during our monthly stewardship work day.

FRESH ACCESS



Granby Congregational Church Open Cupboard Pantry volunteers added Holcomb Farm produce to their weekly food distribution in 2023.

In 2023, the Friends' Fresh Access program provided fresh, nutrient-dense food to seven community partners (see sidebar) who in turn distributed it to clients/members who are either experiencing food insecurity or going through a health crisis. Our program once again grew—this year by an estimated 10 percent—and we provided approximately 30,000 pounds of vegetables and 3,500 pounds of fruit, at a retail value of about \$120,000, to our community partners. For every \$1.00 we raised, we provided an estimated \$1.40 of food to people in need.

2023 Highlights

In June, we welcomed a new community partner: the Granby Congregational Church Open Cupboard Pantry. In its first two seasons, this organization has grown to serve 40 families at their weekly drive-through distribution of fresh and frozen food. We are honored to partner with them in this important work.

Our 2023 goals included: 1) strengthening our community partner relationships; 2) expanding our volunteer base; and 3) increasing the amount of fruit Fresh Access could harvest from other producers. We achieved these

goals by holding in-person community partner reviews, including hosting the Hispanic Health Council team's first-ever visit to Holcomb Farm; and we better organized volunteers for our distributions at the Granby Senior Center and for our weekly fruit harvests in the fall.

We also had aggressive fundraising goals, as each year presents a new challenge to raise the funds needed to provide the promised food. Unfortunately, the combination of weather-related poor farming results and competing

2023 Fresh Access Community Partners:

Granby Partners:

Granby Senior Center
Granby Social Services
Waste Not Want Not Community Kitchen
Granby Congregational Church Open Cupboard Pantry

Greater Hartford Region Partners:

Healing Meals Community Project
Hispanic Health Council
Wheeler Health



Granby Senior Center distribution volunteers handed out fresh produce every week during the growing season thanks to a grant from the Granby Community Fund.

demands for available funding resources forced us to tap into Fresh Access financial reserves, and further increased the challenge we are facing to meet our commitments and replenish reserves in 2024. As others have in the past, we are accepting this challenge with the level of commitment that has always moved Holcomb Farm forward. We have new board members, and we are working with our new Grants and Fundraising committee, our community partners, and the rest of the FOHF board to find and apply for new funding opportunities to ensure the sustainability of the Fresh Access program. All community partners'

Fresh Access produce commitments will remain the same for 2024, thanks to prudent reserves.

Appreciation

Special thanks goes to volunteer Patty Sansone, who organized the Granby Senior Center distributions. Thanks to Patty, the distributions were a fun and efficient way to serve more than 90 Senior Center members, on average, each week. And a huge thanks to all our volunteers for all their tireless efforts and dedication—all done with a great attitude, and for a great cause!

TREASURER'S REPORT

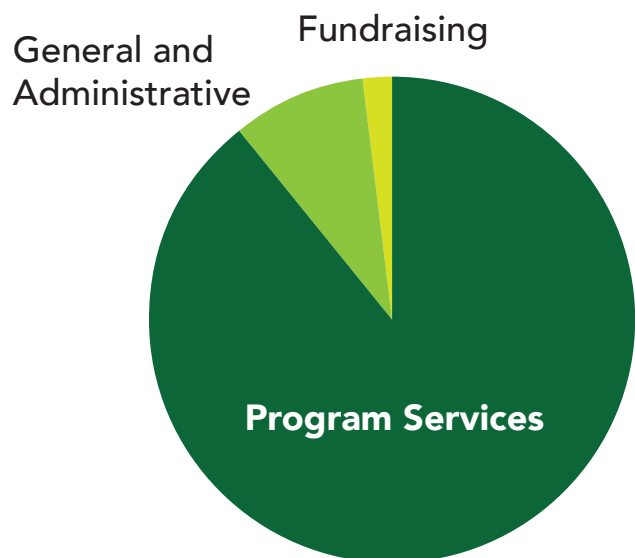
The Friends of Holcomb Farm, a 501(c)3 nonprofit membership organization, finished the year in a solid financial condition, albeit with reduced reserves. In comparison with 2022—which delivered a net operating gain of over \$45,000 because of better-than-expected results in farming and in Fresh Access fundraising—2023 was just the opposite, with a net operating loss over \$40,000. In total, net assets at year end 2023 were \$286,583, down from \$294,546 the year before.

Farming is our primary resource engine and with the cancellation of the Winter CSA we saw 2023 farming revenue decline by some \$65,000, or over 20 percent. Thanks to diligent expense management, farm revenue net of the cost of goods sold was down only 14 percent. Grants and contributions increased 6 percent, but not enough to offset the total 10 percent decline in revenue from \$529,793 in 2022 to \$477,239 in 2023.

Several financial policies guide our activities.

- Annual program budgeting allows for us to roughly track and better manage performance across our primary activities: farming, stewardship and Holcomb Tree Trail, Fresh Access, and general Friends of Holcomb Farm administration.
- When provided, donor direction and intent relative to specific activities of the Friends are strictly adhered to throughout each year. Board designated reserves are used to account for funds which carry over from one year to the next.
- Grants received for specific purposes are closely managed and reported on to the grant-making organizations to assure compliance.
- Debt is not utilized.

An analysis of our functional expenses once again reflects the extreme efficiency of our volunteer-driven activities, with less than 10 percent of expenses going toward General and Administrative.



Holcomb Farm, Inc.
Statement of Activities

Year Ended December 31, 2023; With Comparative Totals for the Year Ended December 31, 2022

	2023			
	Net Assets Without Donor Restriction	Net Assets With Donor Restrictions	Total	2022
Revenues				
Grants & Contributions	\$ 157,943	\$ -	\$ 157,943	\$ 149,037
Programs & CSA Shares	235,103	-	235,103	303,091
Farm Sales Net of Cost of Goods of 2023: \$28,987 and 2022: \$34,240	75,022	-	75,022	87,359
Fresh Access Event Net of Expenses of 2023: \$1,624	1,151	-	1,151	1,523
Thirtieth Anniversary event Net of Expenses of 2023: \$29,458	705	-	705	-
Unrealized Gain (Loss)	5,015	-	5,015	(556)
Gain (Loss) on Sale of Fixed Assets	2,300	-	2,300	(10,661)
Total revenues	477,239	-	477,239	529,793
Net Asset Released from Restrictions	-	-	-	-
Total Revenue and Other Support	477,239	-	477,239	529,793
Expenses:				
Programs	433,133	-	433,133	402,939
Management & General	43,576	-	43,576	39,786
Fundraising	8,401	-	8,401	7,338
Total Operating Expenses	485,110	-	485,110	450,063
Changes in Net Assets	(7,871)	-	(7,871)	(43,583)
Net assets, beginning of year	270,329	24,126	294,455	338,040
Net assets, end of year	\$ 262,458	\$ 24,126	\$ 286,584	\$ 294,456

Holcomb Farm, Inc.
Statements of Financial Position
December 31, 2023; With Comparative Totals for December 31, 2022

	2023			2022
	Net Assets Without Donor Restriction	Net Assets With Donor Restrictions	Total	
ASSETS				
Current Assets				
Cash and cash equivalents	\$ 156,299	\$ 24,126	\$ 180,425	\$ 242,034
Accounts Receivable	543	-	543	260
Prepaid Expenses	20,246	-	20,246	7,686
Operating lease right of use asset	84,405	-	84,405	96,454
Investments	119,685	-	119,685	99,327
Total Current Assets	381,178	24,126	405,304	445,761
Machinery & Equipment				
Machinery & Equipment	393,122	-	393,122	335,820
Less: Accumulated Depreciation	(203,823)	-	(203,823)	(188,455)
Net Machinery & Equipment	189,299	-	189,299	147,365
Total Assets	570,477	24,126	594,603	593,126
LIABILITIES AND NET ASSETS				
Current Liabilities				
Accounts payable and accrued expenses	9,853	0	9,853	13,248
Operating lease liability	85,972	0	85,972	96,454
Deferred Revenue	167,675	-	167,675	144,450
Total Liabilities	263,500	-	263,500	254,152
Net Assets				
Without donor restriction				
Undesignated	53,072	0	53,072	47,429
Board Desingnated	64,606	0	64,606	120,054
Machinery & Equipment	189,299	-	189,299	147,365
Total Without Donor Restrictions	306,977	-	306,977	314,848
With donor restriction	-	24,126	24,126	24,126
Total Net Assets	306,977	24,126	331,103	338,974
Total Liabilities and Net Assets	\$ 570,477	\$ 24,126	\$ 594,603	\$ 593,126

THANK YOU!

The Friends of Holcomb Farm thank the following people, businesses, and organizations for their generous contributions received between July 1, 2023–March 31, 2024. The Friends had 703 members—those who gave \$25 or more to the Friends of Holcomb Farm or joined our CSA during our 2023 fiscal year. Gifts received after March 31, 2024 will be reflected in next year’s annual report.

\$1000+

Nannie and Daniel Brown
Mary and George Colby
Doro Restaurant Group
Jenny and David Emery
Jeanne Galloway and Kathleen Usher
Paula and Lowell Johnson
Sally King and Eric Lukingbeal
Peggy and Jack Lareau
Lynn Lochhead
Natalie Mackiel
Murphy, Laudati, Kiel & Rattigan, LLC
Shirley Murtha
The Oakbridge Group
Emily Ohannessian
Martha and David Rusch
Dianne and James Szipszky
Susan and Ken Walkama

\$500–999

Robert Bystrowski and Catherine Slattery
Kim and Chris Becker
Amy Eisler
Jill and Walter Ford
Hartford Federal Credit Union
Therese Mulvey and Brad McDougall
Northwest Community Bank
Debi O’Keefe and Joel Alsup
Present Company, Inc.
Valerie Raggio and Dave Desiderato
Diane Smith and Wayne Hill
Donna and Jim Snyder
Barbara and Mark Wetzel

\$250-499

Athena Meadowbrook, LLC
Sarah and Brandon Barrett
Flo Bischoff
Cahill Motor Cars, Inc.

Susan Canavan and Joel Danke
Connecticut Back Center, LLC
Adah Dionne
Farmington Valley YMCA
Kristal and Mark Fiorentino
Deborah and Michael Gantt
Peggy and Bob Giles
Granby Land Trust
J. Callender Heminway
Gary Kanter and Kelly Lynch
Susan Keller
Bill Kennedy
Koster Family Chiropractic, LLC
Lisa and Mike Larsen
Kathryn and Harvey Lord
Matt Lloyd Realty Team
Karen McNey
Laura and Mark Midura
O’Brien Nursery
Trish Percival and Rick Orluk
Kelly and Randy Rome
Patricia and Jim Sansone
Heather and Christopher Savino
Selective Development, LLC
Shaffer Beacon Mechanical, LLC
Julia Stainforth
David Tolli
Heather and Sam Tomasetti
Alfred and Helen Wilke

\$100-249

Anonymous (3)
Susan Ackerman and James Rook
Jean Allen
Lori and Fran Armentano
Lee and Chris Barba
Tricia Bennett
Kate Bogli
Jess Brandt and Stefan Harroo
Margaret Buchanan and Lou Golden
Idalia Carvalho
Peggy and Wayne Chapple
Geoffrey Ching

Linda and Gary Daniels-Miller
Carol and Jim Dankosky
Michael DiBiano
Beverly and Roy Duff
Ron and Jay Durej
Empowered Jewelry Art
Julie Erasmus
Robin Finn
Rachel Fontanazza
Mary and Tom Fuller
Lynn Gaylord
Tara and Chris Gervascio
Christine and George Giannoni
Kevin Gough and Paula Jones
Catherine and Robert Grandahl
Sara and David Hadden
Matthew Hamer and Gaylien Chun
Carol Harris
Kendra Hennig
Mary Ann and Paul Henzler
Valorie and Todd Hollister
Margot Hosford
Nancy Kannenberg
Charles Kuchenbrod
Sarah and Alan Leathers
Deb and Tim Lenihan
Amanda Lindberg
Jonathan Lynch
Allison McKeen
Ruth and Richard Meyer
Linda and Thomas Morgan
Betsy Neave
Patrice Nelson
Susan Nilsen
Josephine and Liam O’Leary
Brooke and Dennis Orr
Carol Pescik
Maggie and Bill Percival
Lisa Peterson
Christiane Pimentel
Shana and Dan Purves
Diana and Trevor Reeves
Rita and Peter Rozantes

Karen Rubinow
Pamela Russek
Judy and David Russell
Salmon Brook Veterinary Hospital
Suzanne and Gary Scarcella
Leslie and Joe Schneid
Mary Ellen Schoonmaker and Michael Hoyt
Cindy and Earl Schulz
John Schumann
David Schupp
Peggy and Donald Shaw
Lynette and Bill Simpson
Melody Smith and Joshua Welch
Anita Spadafora
Janet and John Spatcher
Joanne and Richard Stevens
Darcy Topper
Thomas Turon
Catherine and Paul Willis
Michelle Wirth
Deborah and William Woodsome

Up to \$99

John and Cynthia Adams
Kathy Agresta
Cara Akerley
Jenica and David Allen
Joshua Anderson
Elizabeth Appel
Barry and Heather Avery
Heather and Jonathan Banas
Laura and John Banulski
Cheryl Bartley
Peter and Morven Barwick
Wanda Bazyk
William Bentley and Ann Wilhelm
Charles Blair
Tracy Bodine
Mary and Francis Brady
Pamela and Richard Burek
Maxine and Stanley Bystrowski



Linda and Lou Carissimi
 Samantha Castillo-Davis
 Catherine Ceneviva
 Barbara Chiocca and Henry Merriman
 David Chittick
 Wendy Cook
 Marilyn and Buris Dale
 Elaine and Edward Darcy
 Ken and Joan Davis
 Carole Day
 Sri Divakaruni
 Robert Donna
 Cynthia Dowd
 Lois Elsesser and Joseph Nunes
 Grace Epstein
 Coreen and Nicholas Faraco
 Laura and Keith Fetridge
 Colleen Fitzpatrick
 Patricia Freedman
 Barbara and Alan Friedland
 Matthew Garrett and Margot Weiss
 Judy Gessford
 Melody and David Gibbs
 Janette Gill
 Albert Glazier
 Jane Goodell and Donald

Broderick
 Christie Greenberg
 Melissa Hall
 Kathy and Ed Hodgson
 Susan Hoffman
 Yuko Hoffman
 Lisa and Erick Holm
 Rita Isaacson
 Joan Israelson
 Jennifer and Peter Jalbert
 Holly and Curt Johnson
 Retie Johnson
 Virginia and Andrew Keleher
 Maureen and Patrick Kenna
 Christine and Ken Kidder
 Jennifer and Tom Kim
 Laura Eden Kimble
 Martha Klein
 Susanne and Thomas Kornacki
 Scott and Joan Kuhnly
 Kyle Lamoureux
 Pamela Lamson
 Susan and Bryan Larson
 Geri Lavalley
 Jo-Ann and Ron Lebel
 Young Lee
 Dorothy Lennox
 Shirley Leong

Aurelle Locke
 Carey Loughran
 Katherine and John Magarian
 Ellen and Charley Mandelberg
 Arlene and Joseph Mattavi
 Gary Maulucci
 Jeffrey Maytas
 Victoria Mazzei and Richard Stepanov
 Sarah Merrill and Kevin Staples
 Rebecca and William Mikus
 Jane Miller
 Dawn and Wayne Miller
 Amy and John Monticello
 Sally Moon
 Karen and Steve Moore
 Maribeth and Jeffrey Mortillaro
 Joan and John Nagy
 Joan and John Nicoll-Senft
 Kathy Norris
 Marilyn and Thomas Nystrom
 Sam Paul

Susan Pearson and Hank Prussing
 Rocco and Katie Piccirillo
 Jason Polayes and Jennifer Weymouth
 Elizabeth Pond Reza
 Erica Prevost
 Virginia and Mark Proft
 Rosalie Puskar
 Christina Raymond
 Ann and Jim Reed
 Gail Reiner
 Ann Marie Reuter
 Lynn Reynolds
 Daniel Roche
 Roxanne Rosano
 Deborah and Glen Rosenfeld
 Marian and Duncan Rowles
 Joanne and David Russell
 Jennifer Sanborn
 Donna and Rob Schedinger
 Toby Scheel
 Theresa Schrijn
 Cindy and Earl Schulz
 Lonni and Phil Schulz
 Katie and Mark Senerth
 Donna and Jack Sennott
 Julie and Steven Shifreen
 Beth and Brian Smith
 Tracy and Shane Smith
 Kensey Snyder
 Winifred and John Sumner
 Linda Swedo

Ravya Taghavi
 Ellen Thomson
 Lindsay Thomson
 Marcia and Helio Tinone
 Sue and Vince Tokarz
 Krista Trousdale Sullivan
 Kathy and Michael Ungerleider
 Kitty and Jim Vangunten
 Lidia Vilner
 Amanda and Adam Vincent
 Robert Walz
 Dana Warren
 Cathy and Jim Watso
 John Weeks and Chris Chinni
 Natalie Welsh
 Ellen Wetherell
 Maureen and Dennis Williams
 Hillary and Nick Wolff
 Karen and Ben Wright
 Roger Young
 Jane Zande

In Memoriam

In memory of Beverly Bernabo

Tori Birkeland
 William Downs
 The Elkin Family
 Town of Hartland
 Henkel Law Department
 Cherie Henselder
 The Markow Family
 The Park Family
 Melissa Smith

In memory of Margaret Fox

Lisa Corbett and Richard Pfeifer
 Pamela Kirk and John Violette

In memory of Russel Lee

Bolton, PhD
 Lisa Corbett and Richard Pfeifer

Granting Organizations

Hartford Foundation for Public Giving Donor Advised Fund
 Nassau Financial Group
 Northwest Community Bank Foundation
 State of CT Department of Agriculture
 State Line Oil